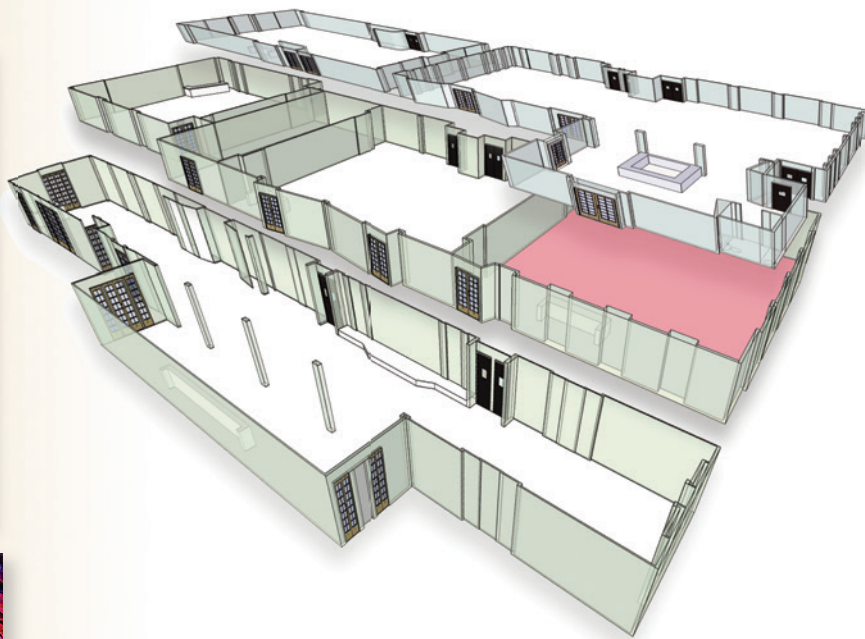


# Empire Room

This room has a voice of its own; it's intimate and very warm. When you invite guests to sit and dine with you in the Empire Room you are inviting them into your life.

A cove-lit, hand-painted sky mural envelops a crystal chandelier— creating an ambiance that is unforgettable.

If you're looking for something impressive for events with 100 guests or less the Empire Room won't disappoint.



## Room Summary & Capacities

- Dimensions: L: 49' 6" W: 45' 7" - 2,240 sq ft
- Seats 70 Guests Buffet-Style
- Seats 100 Guests Dining
- LED-kinetic lighting
- Onyx Stone-Top Bar



Leonard's Palazzo

